

CERTIFICATE OF LOCATION OF GOVERNMENT CORNER

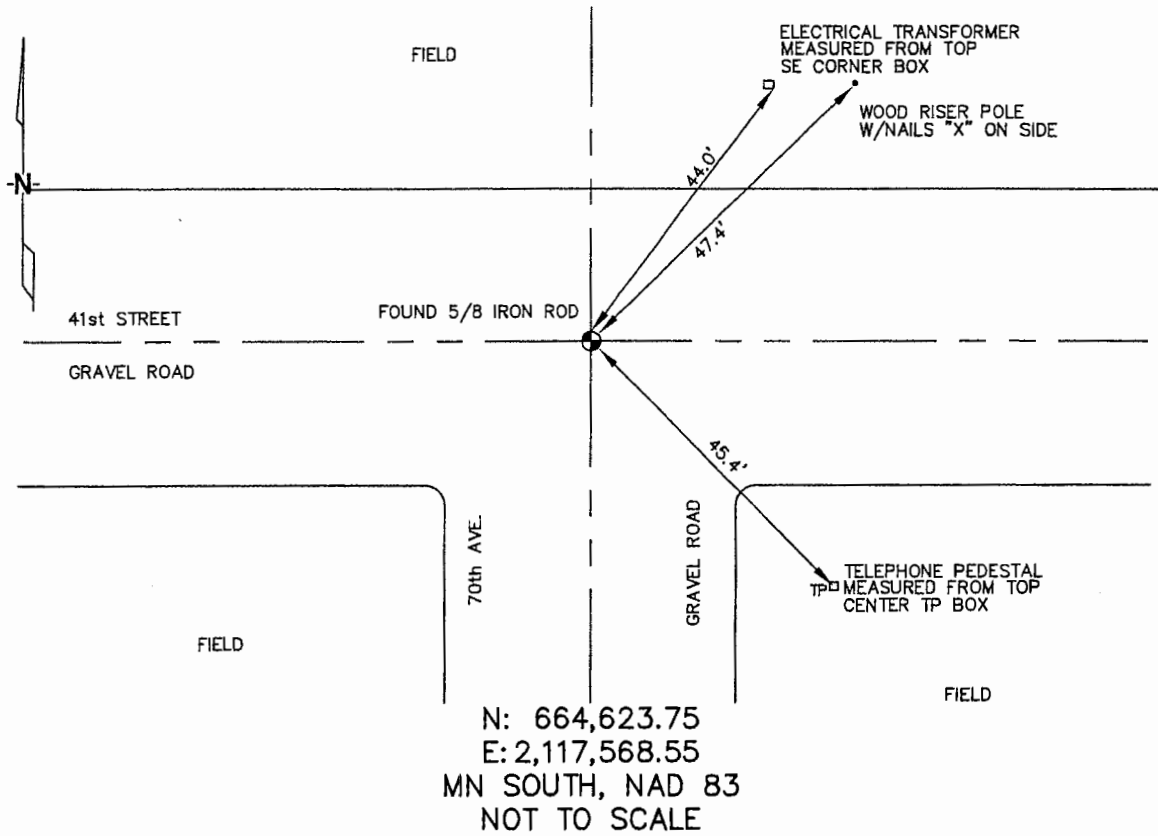
NORTHWEST Corner of Section 17, Township 105, Range 42, 5TH P.M.

STATE OF MINNESOTA, County of MURRAY

At the corner location shown on the sketch :

- On 3/15/2006 found 5/8" IRON ROD @ INTERSECTION OF
GRAVEL ROADS.
- left monument as found, lowered monument, removed monument (explain)
- On _____ set _____

Sketch of reference ties



Statement of evidence relative to this corner location is on back page

I hereby certify that this document and the data contained herein was prepared by me or under my direct supervision.

Thomas V. Zeff 6/29/06
 Thomas V. Zeff Date

Registration No. 44563

- Land Surveyor, Professional Engineer
 County Surveyor, County Engineer

OFFICE OF THE COUNTY RECORDER

County of _____

SEP 28 2006

I hereby certify that this document was filed in the Co. Recorders office at _____ .M. on the day of _____ A.D. , 20

County Recorder James V. Johnson
 By _____, Deputy

DOCUMENT NO. _____

STATEMENT OF EVIDENCE:

NORTHWEST CORNER, SECTION 17, T. 105 N., R. 42 W.,
MURRAY COUNTY, MINNESOTA

- 1861 D.W. WELLMAN & S.S. SMOOT, U.S. DEPUTY SURVEYORS,
MONUMENTED CORNER.
- 4/25/1901 MURRAY CO., FOUND GOVERNMENT MOUND, PIT & STAKE; NO TIES.
- 3/15/2006 ULTEIG ENGINEERS, INC., SURVEY CREW, BRIAN PAYNE, PARTY CHIEF,
FOUND 5/8" IRON ROD AT INTERSECTION OF GRAVEL ROADS.
TIES: NE-44.0' TO TOP, SE CORNER OF ELECTRIC TRANSFORMER BOX;
NE-47.4' TO NAILED 'X' ON SIDE OF WOOD RISER POLE;
SE-45.4' TO TOP, CENTER OF TELEPHONE PEDESTAL;